



Starting Flowsolv® V5

Double Click the Flowsolv® V5 icon on the desktop to start the program. If you cannot locate the icon on the desktop then open Flowsolv® V5 from: 'Start, All Programs, Flowsolv® V5'.

The Workspace

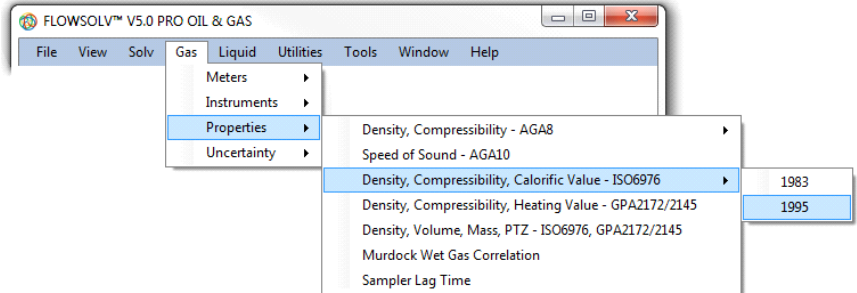
The Menu Bar

All Flowsolv® V5 calculation and operations may be selected using the menu bar and drop-down menus.

Calculations are arranged under four sections: Gas, Liquid, Utilities and Tools.

When a number of the calculation windows are open, the menu bar may be used to switch between windows.

The menu bar also contains options for managing record files and calculation windows.



The Toolbar

The most efficient way of navigating through Flowsolv® V5 is with the toolbar.

Loading a Calculation Data File

Click on the symbol on the toolbar, or click on 'File' then 'Open' on the menu bar. The Open File dialog box will open to allow you to navigate the directories and select a data file, of the type Flowsolv Project File (.FSPV). To load the data file, select the file name and select the 'Open' button.

Saving a Calculation Data File

Click on the symbol on the toolbar, or click on 'File' then 'Save' on the menu bar. The Save File dialog box will open to allow you to navigate the directories and save a data file, of the type Flowsolv Project File (.FSPV). To save the data file, name the file and select the 'Save' button.

You can also add calculation details to the 'Description', 'Ref/Tag' and 'Note' boxes at the top of each calculation.

Gas - Properties - Speed of Sound - AGA10:2003			
Project	West of Shetland	Description	Fiscal Export
SOLVSet	Suilven	Ref/Tag	FE0637
Calc	Gas - Speed of Sound AGA10	Note	Transducer VoS check
Modified	16-Apr-2015	Created	07-Apr-2015

www.flowsolv.com

Printing a Calculation Data File

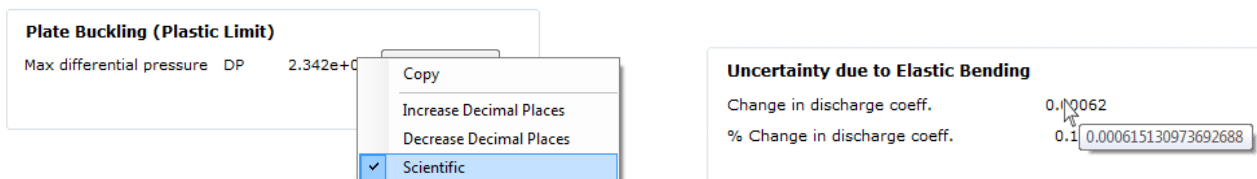
Click on the symbol on the toolbar, or click on 'File' then 'Print' on the menu bar. Select the printer from the list, and click 'Print'.

Features

Input Boxes

Input boxes show values used in calculations rounded to a resolution that is suitable for the purpose of display.

If the number in the input box contains more digits after the decimal point full resolution can be displayed by hovering the mouse over the number.





Features

Engineering Units

Unit conversions rigorously traceable to International Standards.

SI (International System of Units) or CU (Customary Units, Imperial).

A wide choice of engineering units allows you to take readings in whatever units are used by the instrumentation, without the need for manual conversion before calculation. In this way the traceability of the calculation results is maintained and there is an auditable path from input to calculation result.

Calculation Options

Most calculation pages have a choice of calculation methods for maximum flexibility.

Compliance Checking

FLOWSOLV® V5 methods check all input and outputs against compliance with standards, any non-compliances are identified.

Copyright 2015 © SOLV Limited. All rights reserved.

